

Human LILRB2/CD85d/ILT4 Protein



Cat. No. LIL-HM2B2

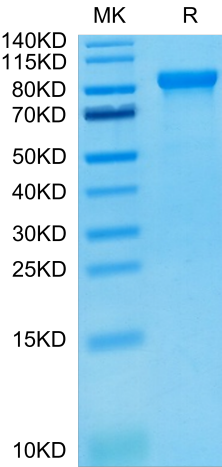
Description	
Source	Recombinant Human LILRB2/CD85d/ILT4 Protein is expressed from HEK293 with hFc tag at the C-Terminus. It contains Gln22-His458.
Accession	Q8N423-1
Molecular Weight	The protein has a predicted MW of 74.1 kDa. Due to glycosylation, the protein migrates to 80-110 kDa based on Tris-Bis PAGE result.
Endotoxin	Less than 1EU per µg by the LAL method.
Purity	> 95% as determined by Tris-Bis PAGE > 95% as determined by SEC-HPLC

Formulation and Storage	
Formulation	Lyophilized from 0.22µm filtered solution in PBS (pH 7.4). Normally 8% trehalose is added as protectant before lyophilization.
Reconstitution	Centrifuge the tube before opening. Reconstituting to a concentration more than 100 µg/ml is recommended. Dissolve the lyophilized protein in distilled water.
Storage	-20 to -80°C for 12 months as supplied from date of receipt. -20 to -80°C for 3-6 months in unopened state after reconstitution. 2-8°C for 2-7 days after reconstitution. Recommend to aliquot the protein into smaller quantities for optimal storage. Please minimize freeze-thaw cycles.

Background	
The immunoglobulin-like transcript (ILT) comprise a family of activating and inhibitory type immunoreceptors whose genes are located in the same locus that encodes killer cell Ig-like receptors (KIR). ILT4, also known as LIR-2 and LILRB2, is a type I transmembrane protein expressed primarily on monocytes and dendritic cells (DC). LILRB2 is a receptor for class I MHC antigens. Recognizes a broad spectrum of HLA-A, HLA-B, HLA-C, HLA-G and HLA-F alleles.	

Assay Data

Tris-Bis PAGE



Human LILRB2 on Tris-Bis PAGE under reduced condition. The purity is greater than 95%.

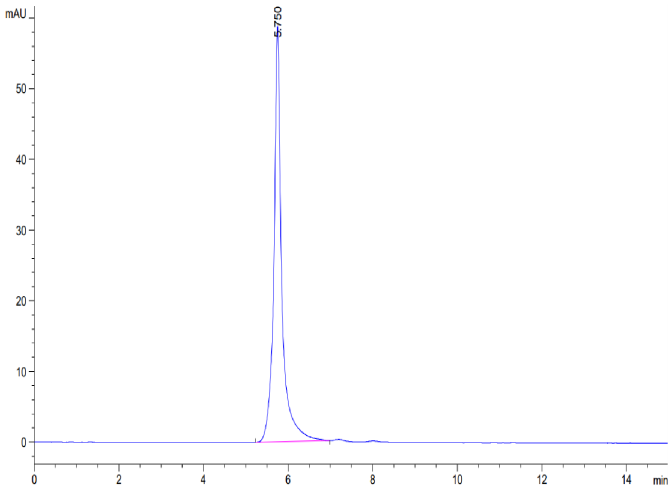
SEC-HPLC

Human LILRB2/CD85d/ILT4 Protein



Cat. No. LIL-HM2B2

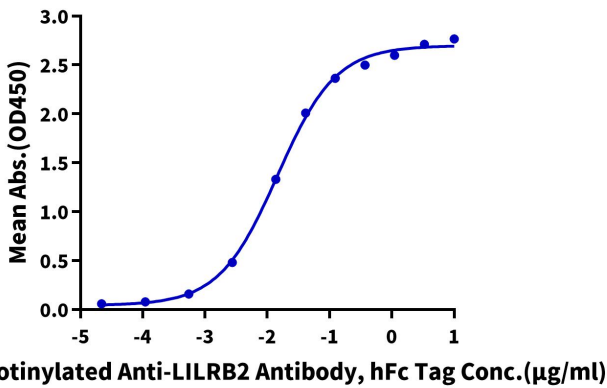
Assay Data



The purity of Human LILRB2 is greater than 95% as determined by SEC-HPLC.

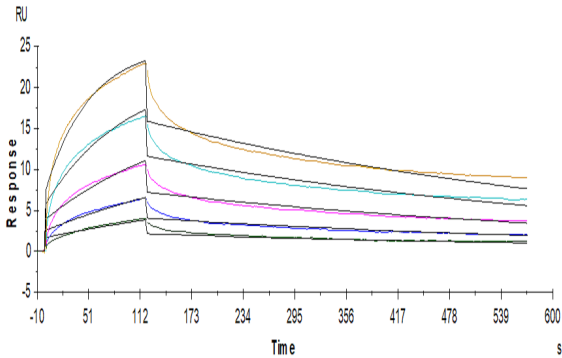
ELISA Data

Human LILRB2, hFc Tag ELISA  
0.1µg Human LILRB2, hFc Tag Per Well



Immobilized Human LILRB2, hFc Tag at 1µg/ml (100µl/well) on the plate. Dose response curve for Biotinylated Anti-LILRB2 Antibody, hFc Tag with the EC<sub>50</sub> of 14.6ng/ml determined by ELISA (QC Test).

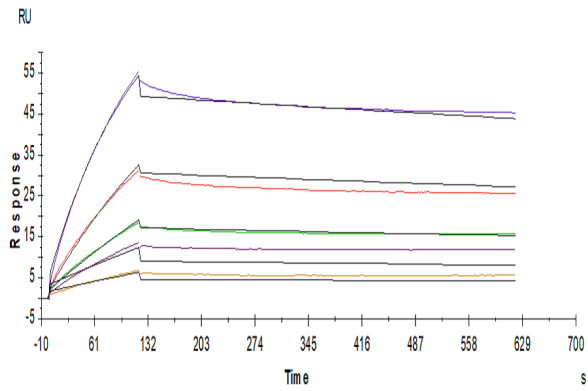
SPR Data



Human LILRB2, hFc tag captured on Protein A Chip can bind Human HLA-G Tetramer, His Tag with an affinity constant of 9.20nM as determined in SPR assay (Biacore T200).

SPR Data

## Assay Data



Human LILRB2, hFc Tag captured on Protein A chip, can bind Human ANGPTL2, His Tag with an affinity constant of 0.14 $\mu$ M as determined in a SPR assay (Biacore T200).